



Richmond & Twickenham
Photographic Society



2021 Exhibition Catalogue

RTPS Members

Page 5

Amanda Day LRPS Amy Hannaford-Cooper Andrew Heaps Photography MA	Sunrise, Sunset L.S.Lowry style Waterloo before lockdown Things move on, time passes	The Charnock Rooms The Landmark Rooms The Landmark Rooms
--	--	--

Page 6

Andy Clifton Ann Healey ARPS DPAGB EFIAP BPE3* Ann Kirkland	Astrophotography at home and away Wood, metal and water 2020	The Charnock Rooms St Luke's Rooms The Landmark Rooms
---	--	---

Page 7

Bulent Acar LRPS Clare Collins ARPS CPAGB Colin Clarke ARPS	London Streets Chihuly at Kew Waterlily House Personal Space	The Charnock Rooms The Charnock Rooms The Charnock Rooms
---	--	--

Page 8

David Mooney Deborah Highton LRPS Diana Loch	Vietnam village street walk Vietnam Experiences Iceland	The Landmark Rooms The Charnock Rooms The Landmark Rooms
--	---	--

Page 9

Edward Draper LRPS Emma Durnford LRPS CPAGB Fred Schwab ARPS	Gum Heads Incoming Tide Early Life	St Luke's Rooms The Landmark Rooms The Charnock Rooms
--	--	---

Page 10

Gordana Ilic LRPS & Chole Campbell Gordana Ilic LRPS & Chole Campbell Howard Baker	Fountains of London - Panel 2 Fountains of London - Panel 1 Reflections in Water	The Charnock Rooms The Charnock Rooms The Charnock Rooms
--	--	--

Page 11

James Kirkland LRPS Jay Charnock FRPS Jocelyn Horsfall ARPS	Lockdown Blues Chihuly Glassworks Hana Yoku – Flower Bathing	The Landmark Rooms The Charnock Rooms The Landmark Rooms
---	--	--

Page 12

John Kelly LRPS CPAGB John Penberthy ARPS John Phillips BPE3*	Musings All That Glisters Old, New, Borrowed and Blue	The Landmark Rooms The Landmark Rooms The Charnock Rooms
---	---	--

Page 13

Leonie Mellmann LRPS Lorraine Clifton LRPS Martin Hodgkinson LRPS	Venice at Night Kew Gardens in Infra-red The Wonderful World of Fungi	St Luke's Rooms The Charnock Rooms St Luke's Rooms
---	---	--

Page 14

Michael Turner Mike Woodman Peter Highton ARPS CPAGB	Bee Close-ups "Nobody is perfect" Monochrome Landscapes	The Landmark Rooms The Landmark Rooms The Charnock Rooms
--	---	--

Page 15

Peter Jones Peter Sullivan Roy Enser DPAGB ARPS BEP3*	Portraits of Cuban Tobacco Farmers Selection of my work Snowdonia	The Landmark Rooms The Landmark Rooms The Charnock Rooms
---	---	--

Page 16

Seamus Reid LRPS Simon Street FRPS Susi Petherick ARPS	Download Festival 2018 Shattered Glass Golden Rajasthan	The Landmark Rooms The Charnock Rooms The Charnock Rooms
--	---	--

Page 17

Tony Drummond-Murray Wendy Akers LRPS Project & Post Processing Groups	"Casual Observations" Richmond Park - My Lock-down Retreat RTPS does Warhol	The Charnock Rooms The Charnock Rooms The Charnock Rooms
--	---	--

St Catherine's Girls School

Page 19

Amy Hannaford-Cooper
Amy Hannaford-Cooper
Ellie Panton
Ellie Panton

Overhead and or Underneath
Structures
A Place I Know
Reflections

St Catherine's Rooms
St Catherine's Rooms
St Catherine's Rooms
St Catherine's Rooms

Page 20

Amber Grewel
Annabel Ferraby
Erin Benche
Olivia Allan
Pippa Flintoff
Zoe Cantouris

Water
Conflict and Tension
Greyscale
Seasons
Skies
Gravel

St Catherine's Rooms
St Catherine's Rooms
St Catherine's Rooms
St Catherine's Rooms
St Catherine's Rooms

Richmond & Twickenham
Photographic Society

Members' Panels

Amanda Day LRPS
Sunrise, Sunset

These two images have been created from photographs taken by me. Some were shot specially for a specific image in question, whereas others were taken from my back-catalogue where appropriate. Using Photoshop, I have made brushes from original photographs of flowers, grasses, birds and more, which were then used to create what I have called "imaginary landscapes", here representing sunrise and sunset.



Amy Hannaford-Cooper
L.S.Lowry style Waterloo before lockdown

This series of photographs were inspired by the artist L.S.Lowry, which were taken at Waterloo station.

The processing of the images were managed in Lightroom, where the figures were elongated, and final images were Dual-Tone.



L.S.Lowry style Waterloo before lockdown
Photographer Amy Hannaford-Cooper.



Andrew Heaps Photography MA
Things move on, time passes

These photographs have been taken this year and very locally. I've looked for new inspiration in very familiar places and limited myself to an old 1960's era manual lens with a tilt adapter on a digital Sony camera.





Richmond & Twickenham Photographic Society
2021 Virtual Exhibition



Andy Clifton

Astrophotography at home (Dorset) and away (Madagascar)

I was inspired to take some astrophotography shots on a tour of Madagascar where the Milky Way is readily visible from the Southern Hemisphere, however during August good views can be obtained cloud cover permitting in dark sky areas of southern England.

Milky Way: Nikon Z7, 20 sec exposure, f 2.8, 14mm, iso 6400.
Star trails :60 exposures, 30sec, f 2.8,14mm, iso 3200. Post processing StarStax.



Richmond & Twickenham Photographic Society
2021 Virtual Exhibition



Ann Healey ARPS DPAGB EFIAP BPE3*

Wood, Metal and Water

Wood, metal and water are all elements which lend themselves well to monochrome. Taken in the City of London and on the Dorset coast, I have chosen to integrate images from two of the areas where I love to photograph.

The conversion to black and white was done in Photoshop CC, firstly using Nik Silver Efex Pro filters but subsequently adding additional processing to enhance particular areas.



Richmond & Twickenham Photographic Society
2021 Virtual Exhibition



Ann Kirkland

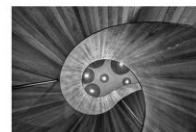
2020

2020. What a year of emotional turbulence for all the world due to the Covid Pandemic.

These pictures summarize and express my feelings for the year – unrest, trapped and wanting to escape. The escape of course is the importance of nature, the happiness, reflection and joy, it can bring and with that the positivity, which can flourish.....



WOOD, METAL AND WATER



ANN HEALEY ARPS DPAGB EFIAP BPE3*



Bulent Acar LRPS
London Streets

"Photography is not about the thing photographed. It is about how that thing looks photographed."

Gary Winograd

Clare Collins ARPS CPAGB
Chihuly at Kew Waterlily House

I have long been a fan of Chihuly Glass and so I thoroughly enjoyed his 2019 exhibition at Kew. I thought that while the exhibits in general were typical of his work the glass in the Waterlily House was truly something very special, so I felt compelled to photograph it. I have attempted to capture its beauty with infrared images which I have hand coloured in Photoshop.

Colin Clarke ARPS
Personal Space

Trevor Baylis Reflects - Eel Pie Island, Twickenham - The prominent and eccentric inventor sits in his living room beneath framed letters from the Queen (CBE & MBE) surrounded by his bachelor clutter and memorabilia. RIP.

I Wish..... - Captured at Lydd-on-Sea, Kent.

Training in Lockdown - Barnes, London - Taken by leaning out of the transom window of my upstairs study.

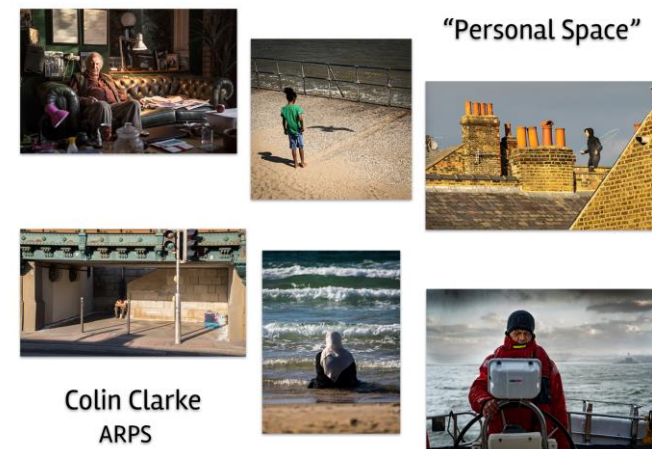
Where Tomorrow? - Captured in Budapest, Hungary.

Cool Contemplation - Captured in Jaffa, Israel.

A Storm is Brewing - Irish Sea - Brigadier Nigel Hall circumnavigates Great Britain.



Chihuly at Kew Waterlily House



Colin Clarke
ARPS

David Mooney
Vietnam Village Street Walk

This set of images were taken in a period of less than one hour whilst walking from a morning shoot back to our lodge in North Vietnam I was amazed to find such great photographic subjects in such a short period of time and in one location. The people seemed so content with their life even though it was a hard agricultural life. A world away from our city existence.

The images have very little post production except for the landscape shot which was processed as a Duotone.

Deborah Highton LRPS
Vietnam Experiences

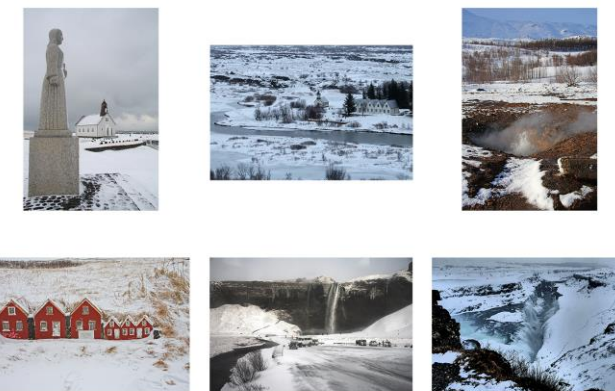
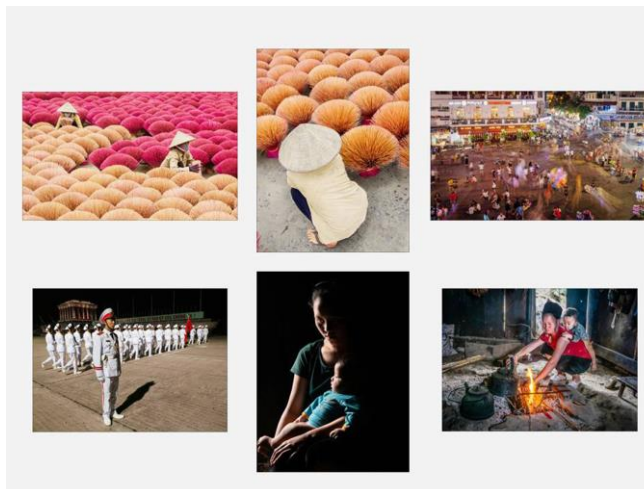
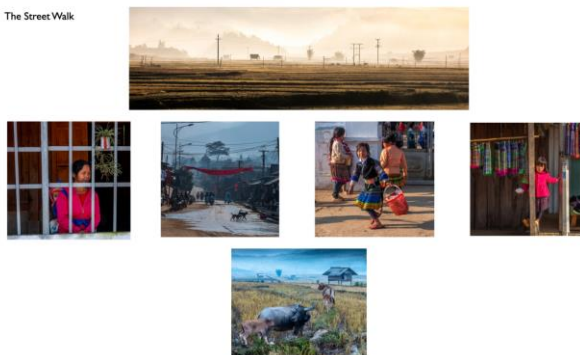
During a few days spent in Vietnam in 2019, I was able to see something of city life and rural farming communities. The contrast was striking but the friendliness in both was heart-warming. Life in the villages would be described as tough by any standards but I felt genuinely welcomed when I was there. Vietnam is a vibrant country representing old and new. I loved my visit there and hope to return.

Diana Loch
Iceland

March 2015 was an exceptionally snowy time in Iceland when even our 8-wheeled drive vehicle was unable to access some parts of the Golden Circle. Spectacular geysers and impressive waterfalls were most photogenic along with the site of the old parliament which stands on the path of the Mid-Atlantic Ridge. The 'hidden people' [elves, fairies, gnomes] feature in the Icelandic folklore, as seen in the 'Little Red Houses' which lie near the Lutheran Strandakirkja 'Miracle Church' overlooked by the statue of the 'Spirit-Being'.

Cameras - Canon 40D; Lumix FZ62.

The Street Walk



Edward Draper LRPS
Gum Heads

These are all hand-made gum bichromate prints printed from inkjet negatives. The portraits are deliberately distressed by severe brush strokes and heavy pigment load, though not enough to cause staining. I enjoy the journey the eye has to make to discover the faces and their features



Emma Durnford LRPS CPAGB
Incoming Tide

This was the last photo trip I made in the UK before the first national lock down in 2020 and looking back now it was rather symbolic. I visited Crosby Beach in Merseyside on a cold sunny day in March just as the tide started to turn. The sole purpose of my visit was to see the 100 cast iron figures created by sculptor Anthony Gormley called 'Another Place'. They were first installed in 2005 and over the years the tides have caused them to sink and corrode. As the tide started to come back up the beach, the figures stood resolute against it as they began to disappear under the waves - keeping their heads above water - standing firm - being swallowed up - all metaphors for what we have been facing over the past year and more.

I love this installation and look forward to being able to visit again in the future. On the day it was clear and sunny but I wanted my images to reflect the feeling of loneliness but also strength and I also wanted to remove the distraction of the bright colours. I converted them to a cool-tone black and white using 'Silver Efex Pro 2' to accentuate the texture of the rusting metal and then introduced some grain or 'noise' to add texture and create a cohesive feel across the panel.



Fred Schwab ARPS
Early Life

During walks in Bushy and Home Parks in the first Lockdown I came across many swans on nests, but most were partly hidden. A few were so exposed that temporary fencing was erected to protect the swans. The nest shown was in a near perfect location in Home Park. I spent many hours watching the hen and cob on and around the nest before the eggs were laid. I then saw them take turns to incubate the eggs, saw the cygnets emerge as they were hatched and then after some days venture into their natural environment, the water.

The photographs were taken over a 4 week period in May and June last year with minimal post-processing.



Gordana Ilic LRPS & Chloe Campbell
Fountains of London

We have been exploring London with our cameras for over twelve years, enjoying its architecture, hidden alleyways, markets, its river...

Last year we were inspired by its fountains, with their variety in style, water movement and the sound of water, providing enjoyment for all that pass them by.

Gordana Ilic LRPS & Chloe Campbell
Fountains of London

We have been exploring London with our cameras for over twelve years, enjoying its architecture, hidden alleyways, markets, its river...

Last year we were inspired by its fountains, with their variety in style, water movement and the sound of water, providing enjoyment for all that pass them by.

Howard Baker
Reflections in Water

These images of tree reflections along the river bank, have been digitally enhanced and coloured.

PANEL SUMMARY FOUNTAINS OF LONDON (Panel 1 of 2)
Gordana Ilic LRPS & Chloe Campbell



PANEL SUMMARY FOUNTAINS OF LONDON (Panel 2 of 2)
Gordana Ilic LRPS & Chloe Campbell



**Reflections
in
Water.**
Photographer
Howard Baker



James Kirkland LRPS
Lockdown Blues

Lockdown has prevented many of us from pursuing our normal photographic interests; however, as in most adverse situations, there is a silver lining. It has provided a unique opportunity to explore and indulge in a range of new techniques and Lockdown Blues are a few of the images created over this period. At a time when so many lives have been thrust into turmoil, it seemed only fitting to select images which had a cheerful and uplifting sky blue colour palette.

Jay Charnock FRPS
Chihuly Glassworks

In 2019, Dale Chihuly (b. September 20th, 1941) exhibited a large selection of glass sculptures in Kew Gardens, mostly brightly coloured. However, some were not and these, classed as 'white flowers' were exhibited in the Lotus House. I was drawn to their translucency and air of fragility, and the possibility of rendering them in a semi-abstract way.

Most of the backgrounds have been removed to simplify the composition.

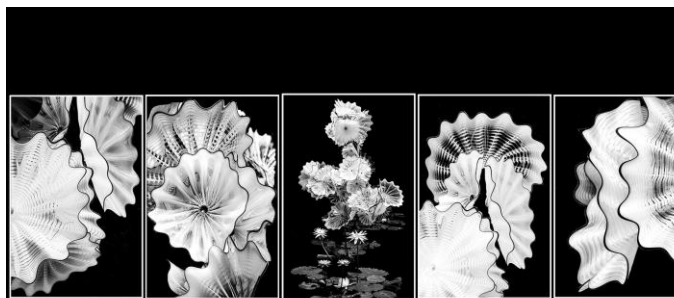
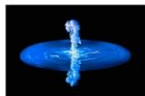
Jocelyn Horsfall ARPS
Hana Yoku – Flower Bathing

This panel looks to capture the emotional and spiritual benefits of Nature – so important over the past year. I invented the term "Hana Yoku" or Flower Bathing; it's like the Japanese practice of "Shinrin Yoku" or Forest Bathing, which is immersing yourself in a mindful way in woodland to create a feeling of wellbeing, but with added colour and delicacy.

Imagine yourself in a flowery ocean, adrift on a sea of blooms....starting at the surface, a light bright sun-kissed feel...then movement with waves breaking and fish swimming past...vibrant corals glowing like jewels as we pass...and deep blues in the quiet depths. Bathing in this mythical ocean of flowers to be filled with joy and peace.

I have used a variety of techniques here, mainly in camera multiple exposures, with additional intentional camera movement. Colour refinements where necessary in post processing. The images were taken in Kew Gardens and at RHS Wisley in 2020.

Lockdown Blues



Chihuly Glassworks

Hana Yoku = Flower Bathing



Light-washed Spray



Breaking Waves



Ebb and Flow



Sea of Coral



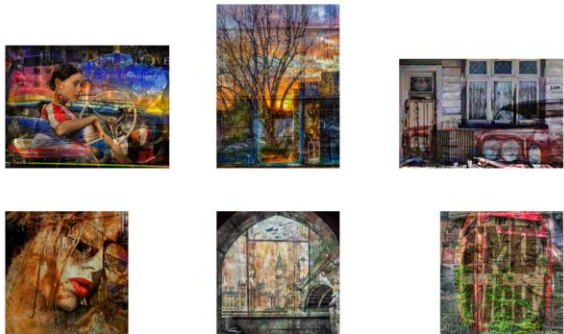
Jewels of the Deep



Blue Sargasso Sea

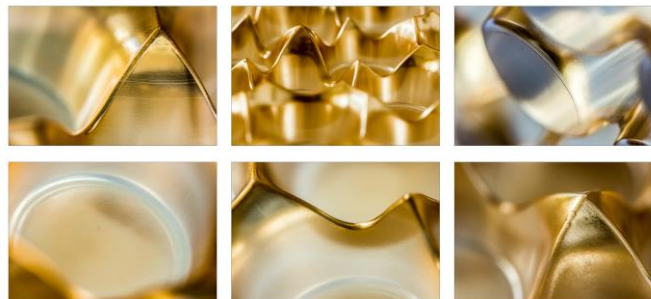
John Kelly LRPS CPAGB
Musings

I enjoy looking at an image and having fun imagining what it could transform into if I pop it into Photoshop and apply other images and textures to it. My panel is of such musings, adding another dimension, or new life to the original image. The more you look into the image, the more it will tell you of its story.



John Penberthy ARPS
All That Glisters

A macro look at transmissive and reflected light through a plastic confectionary box tray. Colour managed in Lightroom with very little additional processing in Photoshop.



John Phillips BPE3*
Old, New, Borrowed and Blue

Borrowing a wedding rhyme for the title seems appropriate for composite photography relying on a successful marriage of subject and location using perspective, shading, colour grading and tonal values.

Tash was our studio model in February 2019 for "The Hour's Getting Late", the backdrop is from the Alcazar in Seville a month later. Wandering around the battlements I had the title, a line from Dylan's All Along the Watchtower. After one acceptance in a salon that spring, I held the shot back for almost two years in favour of another from the same session, until both were successfully entered in different classes in the same exhibition this January.

Carlo (Tattoos and Attitude) came from a recent commercial session which we did not shoot in the Greenwich foot tunnel. Frequently I use techniques learned from cinematography, one point perspective from Kubrick and deep focus from Gregg Toland.

Marcus (Unknown Legend) modelled for the studio group late in the halcyon days of 2019. The composition was a lockdown challenge I recently set myself and am still not convinced by any more realism and it will look like I have simply snapped a poster on a wall. The guitar was borrowed from my daughter Joanna and the title was borrowed from Neil Young.

Freya modelled for us just before the second lockdown. "Round Midnight" is one of my Night Tube series where the lights are turned down and the scene acquires a bluish tint. Borrowed here too are props from Howard and a title from Thelonus Monk. The Northern Line island platforms appear often in BPE exhibitions, uniquely I have been using one as a backdrop for Tash, so this version is unlikely to be seen elsewhere.



Leonie Mellmann LRPS
Venice at Night

I have been a keen photographer for a long time but took it up more seriously after having purchased a SLR camera about 17 years ago – followed quickly by a digital SLR....

One of my favourite places in Europe is Venice. Venice is a colourful place but the textures of the buildings really come out in black and white. I particularly enjoy taking night time shots there when it is much quieter too. The atmosphere is magical even in winter time and the grey and gloomy days make great subjects in black and white. These photos were all taken in November 2019 – the week of the second highest acqua alta “high water” a frightening experience and really brings to light the fragility of a place like Venice and its location. These photos were taken the night before the disaster and also a couple of nights afterwards as we were dodging the high tides. Luckily the new Mose tidal barrier is now activated at high tides and stops Venice from flooding. This experience has certainly not put me off ... in fact I cannot wait to go back there.

Lorraine Clifton LRPS
Kew Gardens in Infra-red

One of the solaces of this last lockdown has been frequent walks in Kew Gardens. During this time, I have used my IR-converted camera to take a series of pictures: from wide vistas to small cameos. I love the subtle greys that IR can produce when light levels are lower, and branches are bare.

Technical details: 830mm conversion of a Nikon D7100 using an 18-300 f/3.5-5.6 lens.

Martin Hodgkinson LRPS
The Wonderful World of Fungi

There are many hundreds of types of fungi in the UK and they can be seen all year round in the UK in a variety of habitats from woods to open fields. They vary considerably in shape, form, colour and distribution. A selection of six have been chosen to convey the variety found locally.

- the classic red capped Fly Agaric found in a variety of woodland
- the wispy Candlesnuff that can be seen on rotting tree stumps throughout the year
- the parasitic Honey Fungus that attacks coniferous and broadleaf trees
- the beautiful orange-brown Velvet Shank seen in autumn and winter
- the Hairy Curtain Crust seen throughout the year on fallen hardwood trees
- the delicate, colourful Yellow Field Cap which shows for less than a day

Most of these images were taken with a standard lens. Since woodlands are generally dark flash was used to enhance depth of field and reduce camera shake.

Venice at Night



Calle del Pisan o Citini



Doge Palace from Piazza San Marco



Rio Della Vosta and Calle Fenice



Campo San Bolo



Basilica San Marco



Bridge at Campo San Bolo



The Wonderful World of Fungi
Martin Hodgkinson LRPS

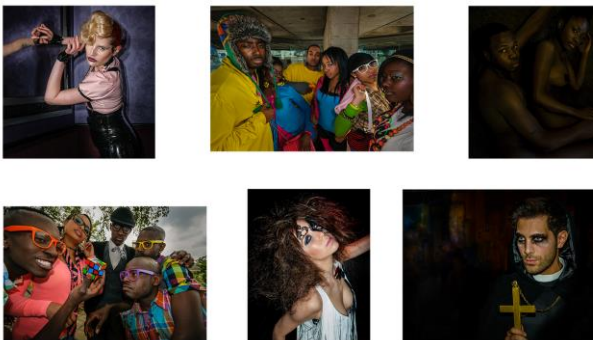


Michael Turner
Bee Close-ups

I have enjoyed nature photography for a long time but since I got my macro lens, I have spent many a happy hour photographing the comings and goings of insects, particularly bees. My panel showcases some of our more unusual and beautiful bees as they seek out pollen in the colourful flowers.



Mike Woodman
"Nobody is perfect"



Peter Highton ARPS CPAGB
Monochrome Landscapes

Sometimes, for me, a landscape image is much more about the graphic nature of the scene in terms of shapes and composition than it is about colour. That is what I enjoyed about these six places and what I tried to bring out in my post-processing. There was little colour in any of these scenes so the decision to convert to monochrome was easy!





Peter Jones

Portraits of Cuban Tobacco Farmers

Just before the world closed down in 2020 Leonie and I managed a second trip to the amazing island of Cuba. As with our first trip in 2017 we spent a few days in the tobacco growing area of Vinales, visiting farms, and photographing farmers. These gentlemen live and work on the land, even beyond their 100th birthday, several generations of each family work on small parcels of land they are allocated. In spite of hardship they are still happy to be photographed by decadent Western photographers.

Photographs were taken in various settings, at work and at leisure on a bright sunny day. Images were taken in colour, RAW files edited in Lightroom, and then converted into Black & White using Silver Efex Pro in Photoshop. Credit goes to Lee Frost and a local photographer, Guillermo Seijo, to enable me to capture these images.

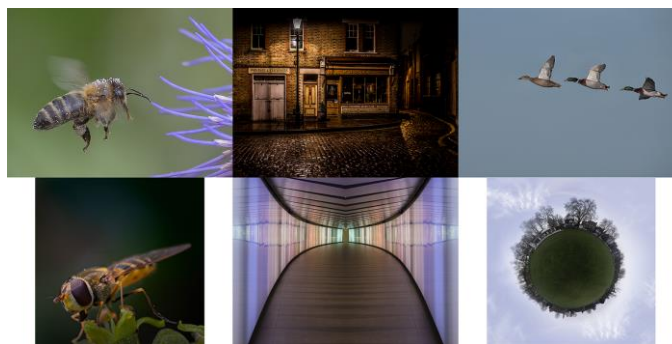


Peter Sullivan

Selection of my work

This is a selection of pictures I have taken; the first 4 images are not manipulated and only touched up and resized, the final 2 images have been manipulated in Photoshop.

All images were taken within Greater London.



Roy Enser DPAGB, ARPS, BPE3*

Snowdonia

The pictures were captured in colour then converted to monochrome in Photoshop. Grain was added for effect. With some dodging and burning I have attempted to portray the weather often experienced in this area. Snowdonia, I find very pictorial regardless of the weather. The sun is known to shine at times.



Seamus Reid LRPS
Download Festival 2018

Download Festival is a popular rock and heavy metal venue held at Donnington Park with a capacity for about 110k fans. Every year around the first weekend of June tens of thousands of diehard music fans make the pilgrimage to enjoy the theatre of music, beer, burgers, tents and the ever-changing British weather, and more beer and cider. Some fans have even been found to sneakily consume water without anything else in it.

Over the past 10 years I have been privileged to photograph some of the unique bands that appear on the several stages at Download. This panel is an attempt to convey some of musicians that entertain their audience during the three days and nights.

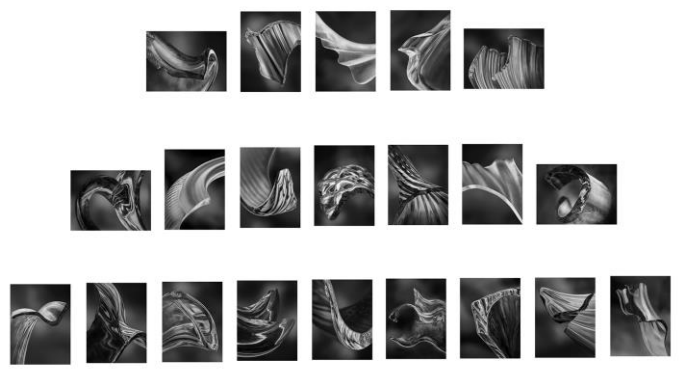
All the images are of the Zippo stage also known as the second stage.



Simon Street FRPS
Shattered Glass

These images are selected from an FRPS Fine Art Panel.

The breakage of an everyday glass was the inspiration for these images. When I paused to look, I was captivated by one particular fragment just 4-5 centimetres long, revealing refracted patterns and gentle curves. When I look at these broken glass images, they trigger associations with larger creatures and objects. Perhaps they remind you of something too?



Susi Petherick LRPS, ARPS
Golden Rajasthan

This time last year I was lucky enough to visit Rajasthan with the ever-inspiring photographer Valda Bailey and a small group of passionate others. We were encouraged not to simply record our time in this stunning part of the world, but to evoke how it felt through creative photographic techniques such as in camera multiple exposures and intentional camera movement with a Nikon D850 and a 70-200 lens. These images have been processed both in lightroom and/or in photoshop.

I was struck particularly by the energy and power of the many gold colours of the area such as the sun, the fabrics, the décor, the foods. Through these creative photographic techniques, I aimed to create a reflection of the wonder that is Rajasthan, the colours I saw and how they felt to me. I hope you enjoy them.



susi petherick

Tony Drummond-Murray
"Casual Observations"

My working life has been spent in the discipline of an Engineering environment, and this has steered my photographic hobby in a similar direction so it now inclines more towards a factual and 'illustrative' style of Photography, rather than aspiring to produce 'Interpretative' images in a Fine Art style.

For me, all/any 'Drama' in an image should be conveyed by the subject matter itself, rather than attempting to introduce it through excessive post-production processing.

Wendy Akers LRPS
Richmond Park - My Lock-down Retreat

Richmond Park with its 2,360 acres is just walking distance from my home and during the pandemic it has been a real balm to the soul. I have set myself a project to capture the beauty of this magical space across the four seasons and this has provided me with a wonderful, renewed impetus for my photography. Looking at my images transports me back to the moment when I pressed the shutter and the feeling of peace and tranquillity that Richmond Park seems to engender. I hope some of this resonates with you, the viewer.

Projects & Post Processing Groups
RTPS does Warhol

The mask has become the emblem of lockdown and the Projects Group together with the Post Processing Group came together to celebrate the future release from the world lockdown and possibly Zoom. The image is a set of self-portraits of RTPS members wearing their masks processed in the style of Andy Warhol Pop Art silk screen prints.

One RTPS first in the creation of this image was a "clickalong" whereby members, in unison, created their own personal images following Zoom tuition.



"Doors to Manual"



Aloe Polyphylla



First Steps in Photography



Shoe about HERE Sir?



End of the Tunnel



Cold Warrior



St Catherine's Girls School
Twickenham

Students' Panels

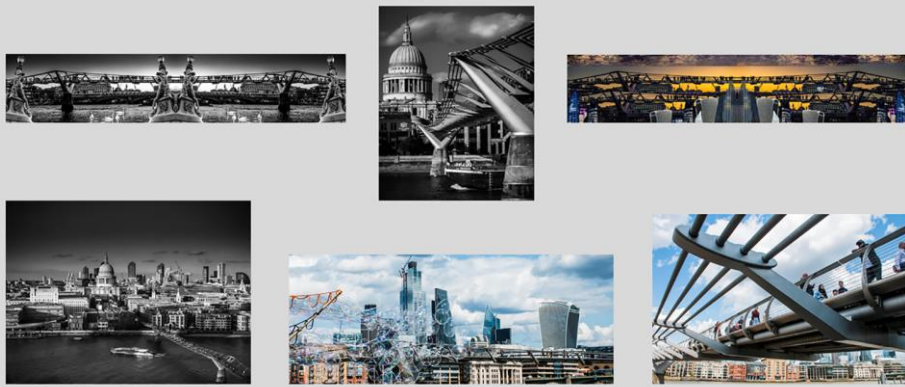
Amy Hannaford-Cooper
Overhead and or Underneath



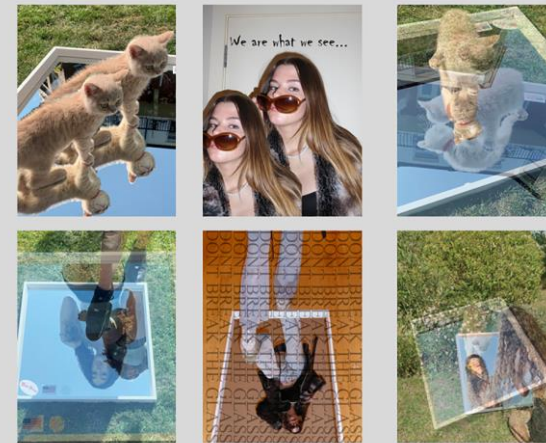
Elle Panton
A Place I Know



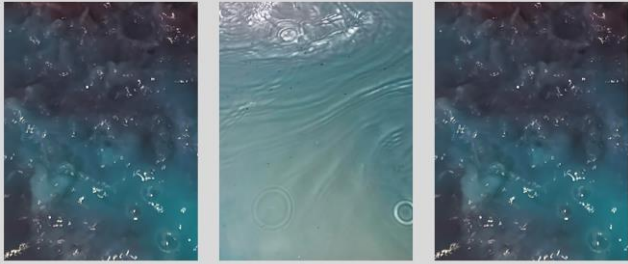
Amy Hannaford-Cooper
Structures



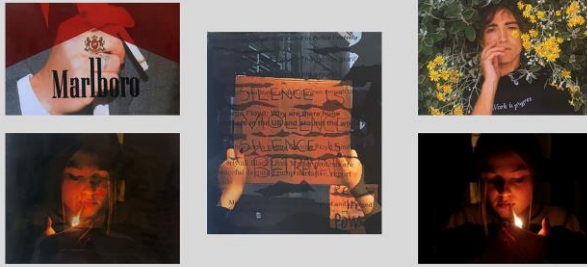
Elle Panton
Reflections



Amber Grewal
Water



Annabel Ferraby
Conflict and Tension



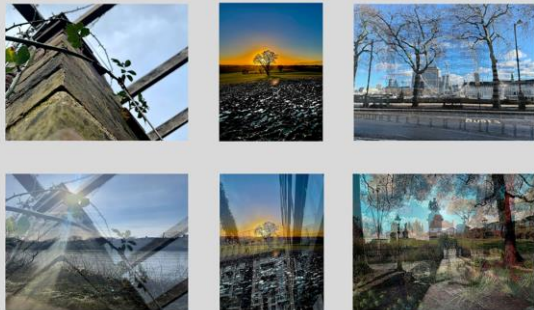
Erin Bencke
Greyscale



Olivia Allan
Seasons



Pippa Flintoff
Skies



Zoe Cantouris
Gravel



